

# HAVEN

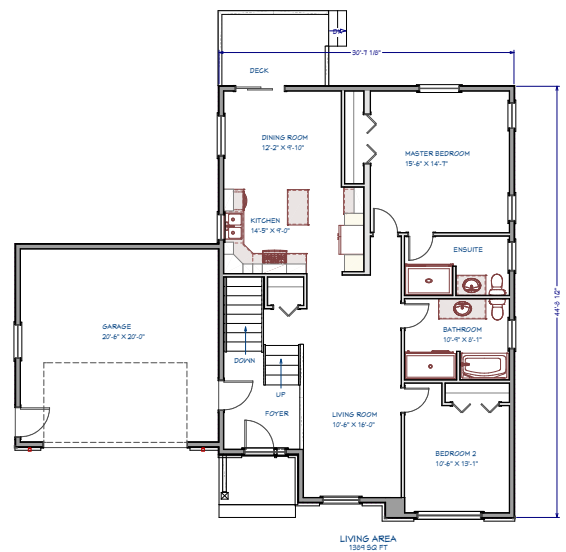
ONE-STORY



## SPECIFICATIONS

TYPE	DETAILS
STYLE	BUNGALOW
SQUARE FEET	1389 SQ.FT
BEDROOMS	2
BATHROOMS.	2
GARAGE	1

The exceptional design and custom roof give this Heaven home a beautiful and welcoming front elevation.



# BELMONT

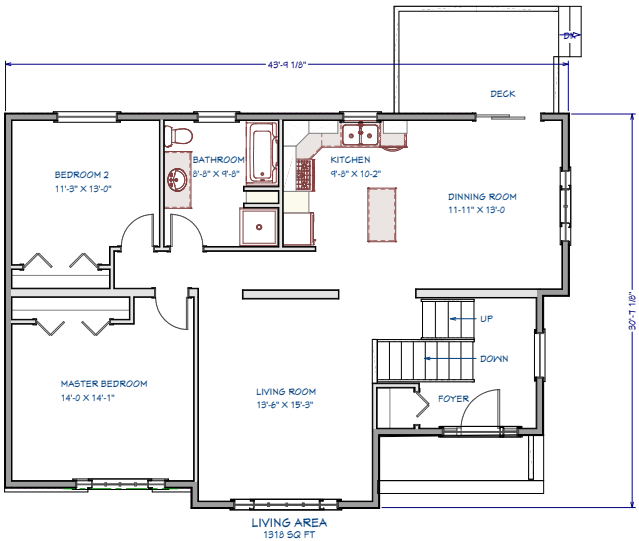
ONE-STORY



## SPECIFICATIONS

TYPE	DETAILS
STYLE	BUNGALOW
SQUARE FEET	1318 SQ.FT
BEDROOMS	2
BATHROOMS.	1
GARAGE	N/A

The clever design of the Belmont will exceed your expectations. On the first floor there is everything you need for daily life adventures.





# MEADOW VIEW

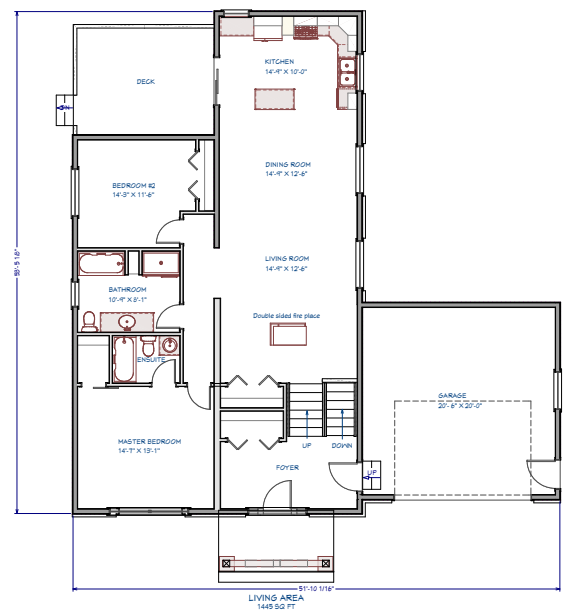
## ONE-STORY



### SPECIFICATIONS

TYPE	DETAILS
STYLE	BUNGALOW
SQUARE FEET	1445 SQ.FT
BEDROOMS	2
BATHROOMS.	2
GARAGE	1

Our beautiful Meadow view offers a living space that is both trendy and comfortable. This modern model, will delight buyers searching for a great quality home at an affordable price.



# ORCHARD

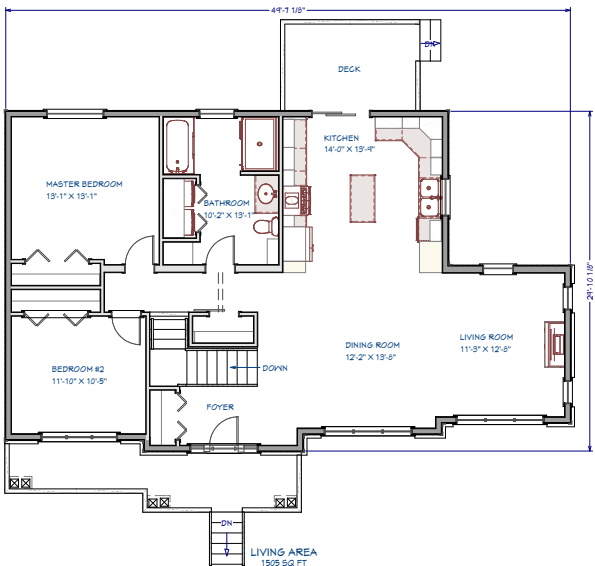
ONE-STORY



## SPECIFICATIONS

TYPE	DETAILS
STYLE	BUNGALOW
SQUARE FEET	1505 SQ.FT
BEDROOMS	2
BATHROOMS.	1
GARAGE	N/A

The Orchard home is stunning from the road with its multi-level roof lines. Enjoy the fire place and the natural light in your dinning room with its 180 degree view of your backyard, perfect for city and country living.



# LOYALIST

## ONE-STORY



### SPECIFICATIONS

TYPE	DETAILS
STYLE	BUNGALOW
SQUARE FEET	2975 SQ.FT
BEDROOMS	4
BATHROOMS.	3
GARAGE	1

The grand stature of the Loyalist home commands respect but hides a cozy and warm place to live. Everything was thought through . A multitude of storage, a profusion of rooms, a garage; all to welcome a large family and allow them to create their best memories.

